



**PINE  
CREEK  
HOMES**

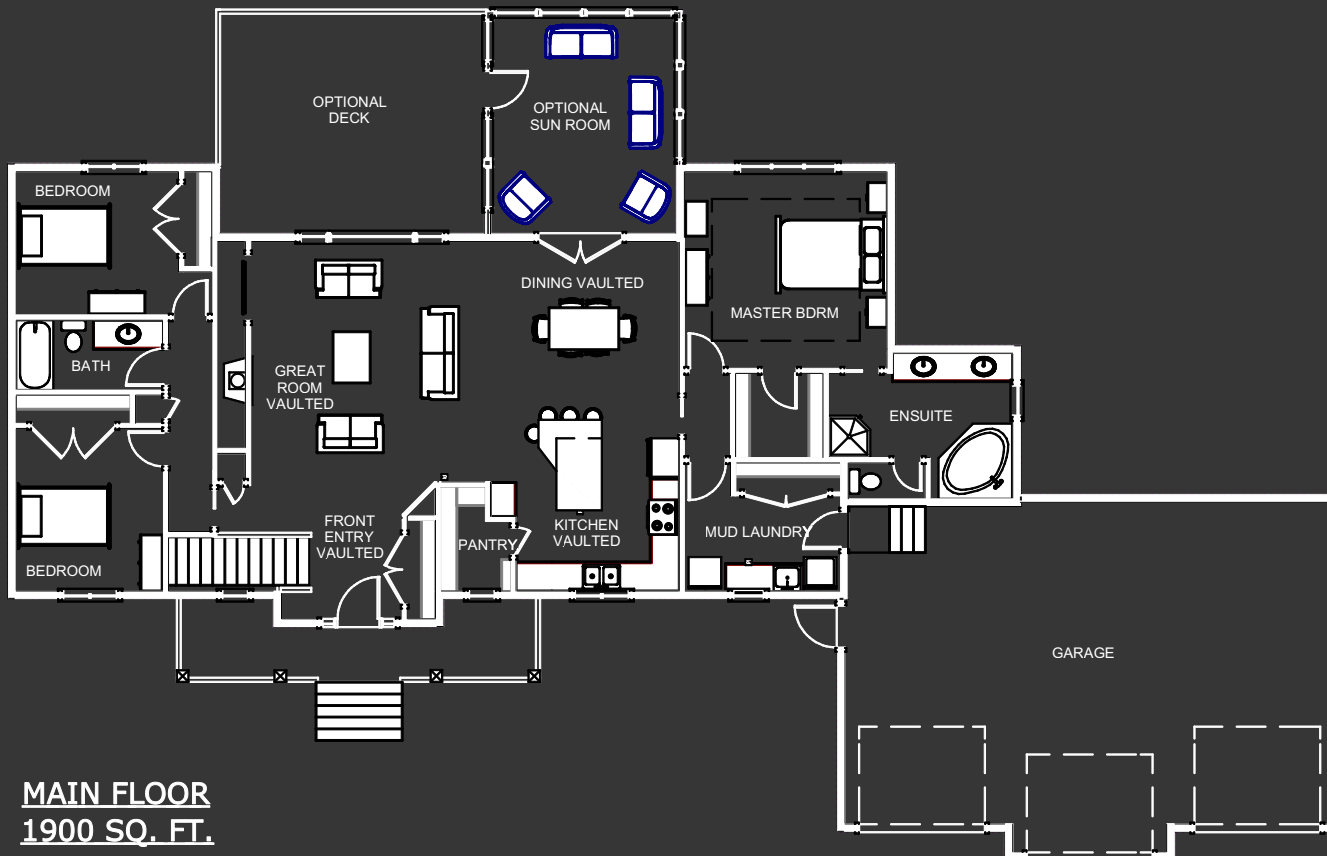
## "THE TAMARACK"

### PLAN SPECIFICATIONS

TOTAL AREA = 1900 SQ. FT.  
 OPTIONAL SUNROOM = 224 SQ. FT.  
 OVERALL DIMENSIONS 95' X 61'



**FRONT ELEVATION**



### ROOM DIMENSIONS

LIVING VAULTED 17'8" X 17'3"	BEDROOM 11'8" X 10'3"
FRONT ENTRY VAULTED 6'6" X 9'5"	BEDROOM 10'7" X 11'7"
KITCHEN VAULTED 13'6" X 12'11"	BATH 10'7" X 5'0"
DINING VAULTED 12'8" X 11'9"	PANTRY 5'1" X 7'5"
MASTER BDRM 14'6" X 14'1"	MUD LAUNDRY 11'2" X 6'10"
ENSUITE 13'3" X 7'6"	GARAGE 35'0" X 25'0"
	OPTIONAL SUN ROOM 13'4" X 15'7"

# The Tamarack

The Tamarack is a very popular design on our website, with 1,900 square feet of floor space, three bedrooms and two bathrooms. The covered entryway and front porch, with a raised dormer above, make for great curb appeal.

When you walk into the entry, you immediately notice the high ceiling that leads into the 12 foot vaulted ceilings of the great room. This living area centers around a fireplace/entertainment unit that is fully customizable to suit your needs and style.

The large window facing the backyard lets in lots of natural light, flooding the space with sunlight and providing views into the backyard to watch the kids play.

The L-shape kitchen features a massive eat-in island, with plenty of space to serve food, entertain and eat all at the same time. Another great feature of this kitchen is the large walk-in pantry.

The patio doors behind the dining area lead directly into a sunroom, which is surrounded by windows on three sides. The sunroom is situated for maximum air flow and maximum natural light, both of which can be enjoyed in the beautiful summer days and nights.

The sunroom could easily be made into a four season room to add space to the home in the winter months when we feel like we need it the most.

The master suite is separate from the other two bedrooms for added privacy. It features a nine foot tray ceiling, a large walk-in closet and an ensuite bath that has everything you might want - dual sinks, a custom shower, a soaker tub and a separate room for the toilet.

The oversize triple garage has an extra deep center bay for longer vehicles and leads directly into a large entryway with an option for main floor laundry (shown). The space used for the main floor laundry could also be used for coat hooks and benches or an extra closet, if that better suits your needs.

The last, and one of the most important things to note about this and all of our other plans, is that these designs are simply meant to give you ideas for a starting point. Every home we build has its own custom plan, and we never build the exact same house twice. So if you see something close to what you like, we can use that as a starting point, or if you don't see anything you like, feel free to come sit down with us and we can draw you your own custom plan from scratch. We look forward to hearing from you!