



**PINE
CREEK
HOMES**

"THE ROBSON"

PLAN SPECIFICATIONS

TOTAL AREA = 2013 SQ. FT.
OVERALL DIMENSIONS 60' X 40'



FRONT ELEVATION

ROOMS

GREAT ROOM
18'7" X 18'11"

KITCHEN
12'1" X 9'5"

DINING
12'1" X 9'1"

DEN
11'4" X 12'6"

ENTRY
6'11" X 14'10"

PANTRY
6'5" X 4'9"

POWDER
5'0" X 4'9"

GARAGE
21'4" X 21'4"

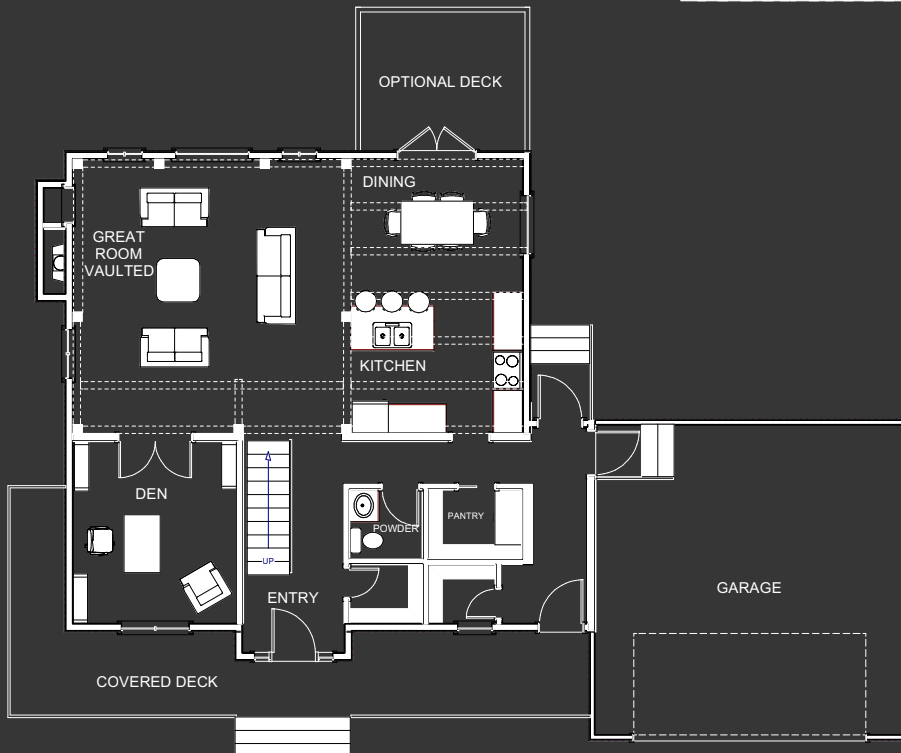
MASTER BDRM
14'7" X 12'7"

ENSUITE
10'11" X 8'1"

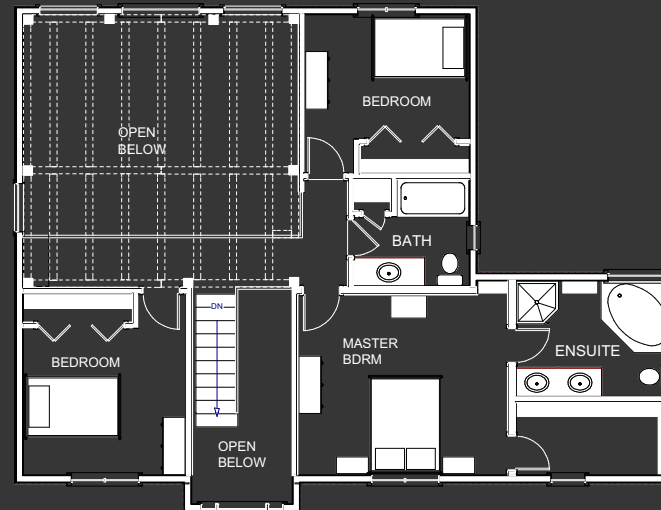
BEDROOM
11'4" X 10'2"

BEDROOM
11'6" X 8'8"

BATH
8'1" X 7'5"



MAIN FLOOR
1167 SQ. FT.



2nd FLOOR
846 SQ. FT.

The Robson

The Robson, a 2,013 square foot hybrid timber frame design, has a classic two storey country look, featuring three bedrooms and three bathrooms. The covered deck and entry way, along with the timber gable details, create nice curb appeal.

As a result of a simple footprint and efficient layout, this is an extremely cost effective timber frame design.

Walking through the front door of this home, you find yourself in the entryway, with 18 foot high ceilings that lead directly into the vaulted timber frame great room. The great room is full of windows for maximum natural light to highlight the wood beams, and provide views to the backyard.

The main living area centers around a built-in fireplace and entertainment unit that can be customized to fit your needs and style.

The kitchen and dining are completely open to the living area, with a flat timber ceiling above them to give an extremely roomy feel to this main floor. The kitchen sink is located in a large island, creating a very functional kitchen for prep work and cooking.

A large walk-in pantry is located between the garage entry and the kitchen to make it easy to access when bringing in groceries from the car, as well as getting groceries from the kitchen. Both entry ways also feature walk-in closets for coat and shoe storage.

All three spacious bedrooms are on the second floor, and are connected by a catwalk that overlooks the great room. The large master bedroom has it's own walk-in closet and a four piece ensuite bath, with dual sinks and a soaker tub.

The den is another great feature of this home - with double doors, it can be opened up, to feel like part of the great room, or be closed off for a quiet space to work. It could also double as a spare bedroom for guests.

The last, and one of the most important things to note about this and all of our other plans, is that these designs are simply meant to give you ideas for a starting point. Every home we build has its own custom plan, and we never build the exact same house twice. So, if you see something close to what you like, we can use that as a starting point, or if you don't see anything you like, feel free to come sit down with us and we can draw you your own custom plan from scratch. We look forward to hearing from you!